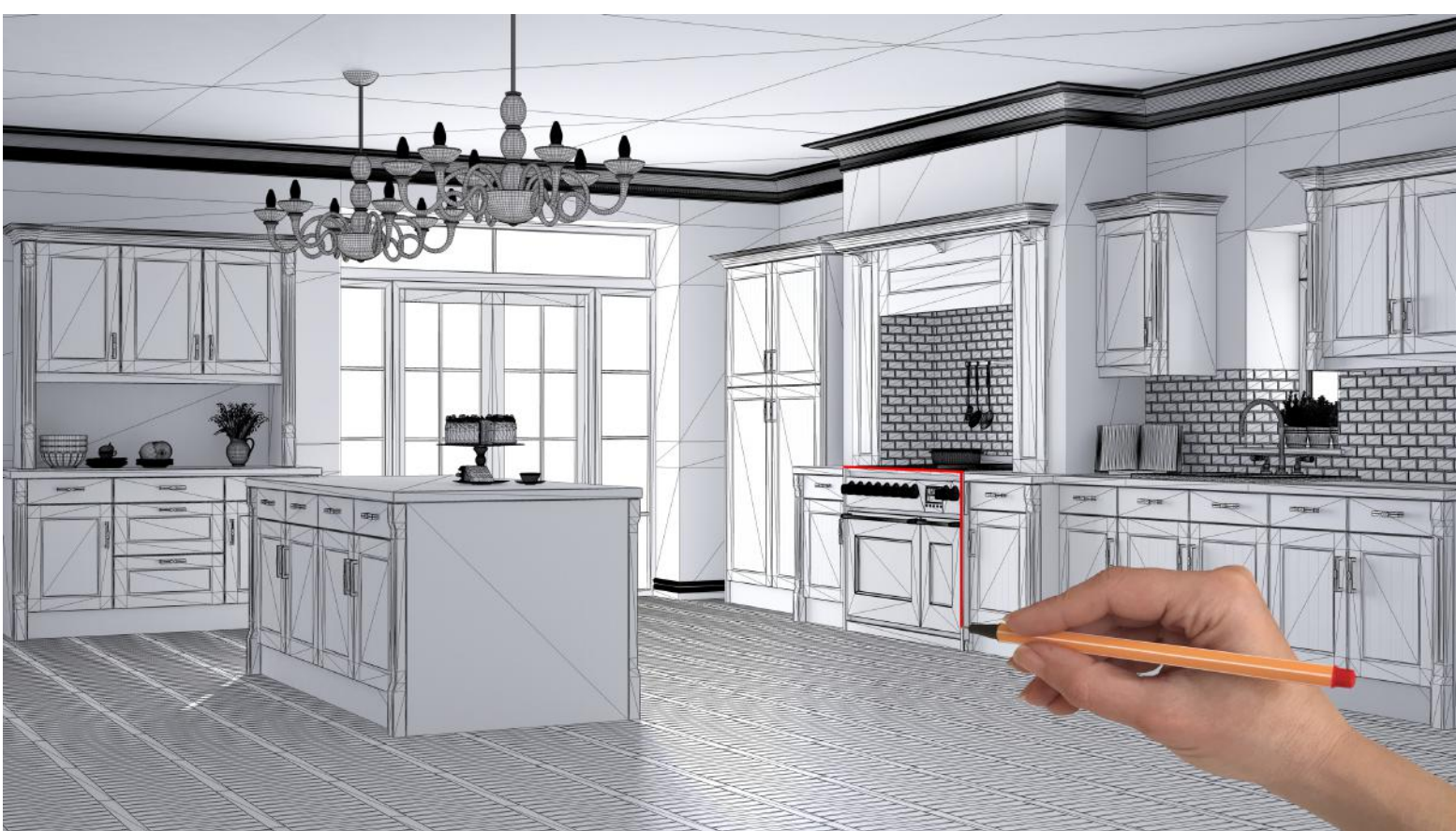




WHAT WE OFFER



Our company

Plus Kitchen Design boasts a wide array of high-quality cabinet combinations allowing you to design the perfect kitchen or bath that works for your family's lifestyle. In addition to Kitchen and bath, we manufacture kitchen countertops, vanity tops, table tops, fireplaces, and bar tops. We will make and install any stone items you need for your home interior design.

Last (but not least), we have innovative closet design options — which include accessories, finishes and lighting — can take your reach-in closet system or walk-in closet to a new level of organization. By maximizing the hidden potential of any bedroom closet with a personalized closet design tailored to your needs, style and budget, exceptional storage and organization will be an integrated part of your daily life.

"We will make your dream kitchen, bathroom, and closet a reality at an affordable price while maintaining the highest quality and minimizing stress."

This is the philosophy that sparked our interest. With Plus Kitchen Design, you can relax knowing that our team of experts will walk you through the entire process, from designing to making it a reality with professional installation.

How we operate our business says a lot about our business.

Meet our team



Leonardo Cordoba

Business Development Manager



Ariel Papagno

Operation Manager



Mariana Nigro

Sales Manager

Marketing



Stasia Kazlauskas

Sales / Designer

CONTENTS

5 Kitchen Cabinets

- Traditional Style
 - Shaker Style Door
- Modern Style
 - European Style Door
- Handle-Less
 - European Style Door

14 Vanity Cabinets

- Forever Transitional
- Unbeaten Transitional
- Essential Contemporary
- Modern Classic
- Floating Beauty
- Eternal Contemporary

17 Countertops

- Quartz
- Granite
- Marble

19 Closets

- California Closets
 - Walk-In Closets
 - Reach-In Closets

21 Finishing

- Moulding
- Fillers
- Panels
- Design Elements
- Specialty Cabinets

23 Accessories

- Decorative Cabinets Hardware
- Cabinets Organizers
- Stainless Steel Sinks & Farm Sinks
- Kitchen and Bath Faucets

Kitchen Cabinets

Do you want to replace your old kitchen cabinets? Plus Kitchen Design supplies high-quality kitchen cabinets professionally installed.

OUR COLLECTIONS



TRADITIONAL STYLE

A timeless, classic taste and at the same time meets the highest demands in technology and function.

PRODUCT SPECIFICATIONS

- Full Overlay Doors and Drawers, 3/4" Thick Panels (Frame Cabinet)
- 6 Way Adjustable European Style Fully Concealed Soft-Closing Hinges
- Adjustable 3/4" Shelf, 1/2" Cabinet Grade Plywood, Metal Shelf Rests
- Dovetail Drawer 1/2" Thick Solid Wood Side Panels Without Finger Joints
- Full Extension Soft-Closing Under-Mount Concealed Glide System
- 1/2" Thick Grade Plywood Box Construction
- Metal Brackets Reinforcements for Base Cabinets
- Double Doweled Face Frame Joint
- 3/4" x 1 1/2" Hardwood Face Frame
- Door Bumpers

DOOR COLOR

SINGLE SHAKER STYLE



Aria Blue



White



Ebony

DOUBLE EDGE SHAKER STYLE



Smoke Gray



Sterling



Soda

RAISED PANEL



Newport



Perla



Shalton



Avalon

PRODUCT SPECIFICATIONS

- Full Overlay (Frameless Cabinet)
- All Wood Stained Door
- Five Piece Door (Shaker)
- Five Piece Mitered Door (Double Shaker and Raised Door)
- Flat/Recessed Panel Door (Shaker and Double Shaker Door)
- Raised Center Panel Door (Shaker and Raised Door)
- Slab Drawer Face/Top Base and Drawer Base (Shaker Door)
- Slab Drawer Face/Top Base Drawer Only (Double Shaker Door)
- All 3/4" Plywood Box Construction

DOOR COLOR

SINGLE SHAKER STYLE



White



Dark Espresso



Natural



Gray

DOUBLE EDGE SHAKER



Walnut



Espresso

RAISED PANEL



Coffee



White



MODERN STYLE

The Modern Style was created using the latest surfacing technology. It offers a wide range of colors in super matte, in high-gloss, metaldeco, or matte linear textured patterns.

PRODUCT SPECIFICATIONS

- Full Overlay Doors and Drawers, 3/4" Thick Panels
- 6 Way Adjustable European Style Fully Concealed Soft-Closing Hinges
- Adjustable 3/4" Shelf, 1/2" Cabinet Grade Plywood, Metal Shelf Rests
- Dovetail Drawer 1/2" Thick Solid Wood Side Panels Without Finger Joints
- Full Extension Soft-Closing Under-Mount Concealed Glide System
- 1/2" Thick Grade Plywood Box Construction
- Metal Brackets Reinforcements for Base Cabinets
- Double Doweled Face Frame Joint
- 3/4" x 1 1/2" Hardwood Face Frame
- Door Bumpers

DOOR COLOR

SUPER MATT



ANTRACITA



BASALTO



BLANCO



CASHMIRE



MAGNOLIA



NEGRO



ORIENTAL
BLACK



ORIENTAL
WHITE



GRIS PLOMO

HIGH GLOSS



BLANCO



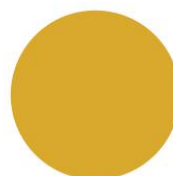
MAGNOLIA



CASHEMIRE



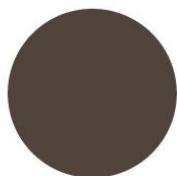
ANTRACITA



CURRY



GRIS NUBE 03



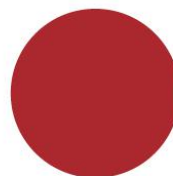
LAVA



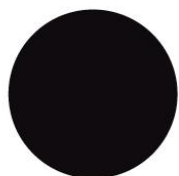
GRIS PLOMO



BERENJENA



BURDEOS



NEGRO



GRIS 02



BASALTO



ROJO

METALDECO



ANTRACITA SM



BASALTO SM



BLANCO SM



NEGRO SM



CASHEMIRE SM



GRIS NUBE



MAGNOLIA
SM

MATTE/TEXTURES

NATURAL WOOD



BLA-NW



ANT-NW



CAS-NW



GP-NW



BAS-NW

JEREZ/OLMO



OLM-001-MR



OLM-002-MR



OLM-003-MR

ICE CREAM



ICW-001-JA



ICW-002-JA



ICW-003-JA



ICW-004-JA

EVORY



EV-003-JA



EV-004-JA

FRAPPÉ



FFP-001-TY



FFP-002-TY



FFP-003-TY



HANDLE-LESS

All in all, a versatile and full handle-less range that offers individual planning and design possibilities whatever the requirements.

PRODUCT SPECIFICATIONS

- Full Overlay Doors and Drawers, 3/4" Thick Panels
- 6 Way Adjustable European Style Fully Concealed Soft-Closing Hinges
- Adjustable 3/4" Shelf, 1/2" Cabinet Grade Plywood, Metal Shelf Rests
- Dovetail Drawer 1/2" Thick Solid Wood Side Panels Without Finger Joints
- Full Extension Soft-Closing Under-Mount Concealed Glide System
- 1/2" Thick Grade Plywood Box Construction
- Metal Brackets Reinforcements for Base Cabinets
- Double Doweled Face Frame Joint
- 3/4" x 1 1/2" Hardwood Face Frame
- Door Bumpers

DOOR COLOR

SUPER MATT



ANTRACITA



BASALTO



BLANCO



CASHMIRE



MAGNOLIA



NEGRO



**ORIENTAL
BLACK**



**ORIENTAL
WHITE**



GRIS PLOMO

HIGH GLOSS



BLANCO



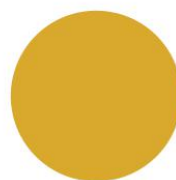
MAGNOLIA



CASHMIRE



ANTRACITA



CURRY



GRIS NUBE 03



LAVA



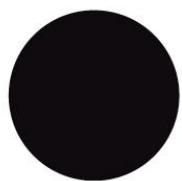
GRIS PLOMO



BERENJENA



BURDEOS



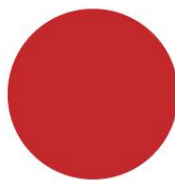
NEGRO



GRIS 02



BASALTO



ROJO

METALDECO



ANTRACITA SM



BASALTO SM



BLANCO SM



NEGRO SM



CASHMIRE SM



GRIS NUBE



MAGNOLIA
SM

MATTE/TEXTURES

NATURAL WOOD



BLA-NW



ANT-NW



CAS-NW



GP-NW



BAS-NW

JEREZ/OLMO



OLM-001-MR



OLM-002-MR



OLM-003-MR

ICE CREAM



ICW-001-JA



ICW-002-JA



ICW-003-JA



ICW-004-JA

EVORY



EV-003-JA



EV-004-JA

FRAPPÉ



FFP-001-TY



FFP-002-TY



FFP-003-TY

Vanity Cabinets

Are you looking for a new bathroom vanity or a complete bathroom renovation? Plus Kitchen Design has everything you need for a successful bathroom renovation. We have a vanity to fit your space and taste, no matter how big or small it is. We also have double vanities for bathrooms where space isn't an issue but plenty of storage is required.

OUR COLLECTIONS



FOREVER TRANSITIONAL

PRODUCT SPECIFICATIONS

- Sizes:
24" x 34" x 18"
30" x 34" x 18"
36" x 34" x 18"
42" x 34" x 18"
48" x 34" x 18"
60" x 34" x 18"
72" x 34" x 18"
- Material: Wood
- Colors: White, Glossy White, Black, Gray, Navy Blue



UNBEATEN TRANSITIONAL

PRODUCT SPECIFICATIONS

- Sizes:
24" x 34" x 18"
30" x 34" x 18"
36" x 34" x 18"
42" x 34" x 18"
48" x 34" x 18"
60" x 34" x 18"
72" x 34" x 18"
- Material: Solid Wood
- Colors: White, Glossy White, Black, Gray, Navy Blue



ESSENTIAL CONTEMPORARY

PRODUCT SPECIFICATIONS

- Sizes:
24" x 34" x 18"
30" x 34" x 18"
36" x 34" x 18"
48" x 34" x 18"
60" x 34" x 18"
72" x 34" x 18"
- Material: PVC
- Colors: White, Glossy White, Black, Gray, Navy Blue



MODERN CLASSIC

PRODUCT SPECIFICATIONS

- Sizes:
20" x 34" x 18"
24" x 34" x 18"
30" x 34" x 18"
36" x 34" x 18"
40" x 34" x 18"
48" x 34" x 18"
60" x 34" x 18"
72" x 34" x 18"
- Material: PVC
- Colors: White, Glossy White, Black, Gray, Navy Blue



FLOATING BEAUTY

PRODUCT SPECIFICATIONS

- Sizes:
24" x 34" x 18"
30" x 34" x 18"
36" x 34" x 18"
48" x 34" x 18"
60" x 34" x 18"
- Material: PVC
- Colors: White, Glossy White, Black, Gray, Navy Blue



ETERNAL COMTEMPORARY

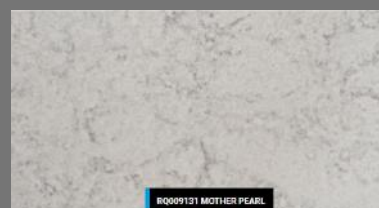
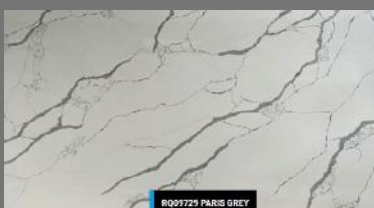
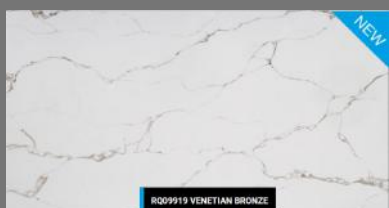
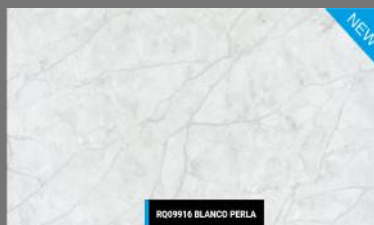
PRODUCT SPECIFICATIONS

- Sizes:
24" x 34" x 18"
30" x 34" x 18"
36" x 34" x 18"
40" x 34" x 18"
42" x 34" x 18"
48" x 34" x 18"
60" x 34" x 18"
72" x 34" x 18"
- Material: Solid Wood
- Colors: White, Glossy White, Black, Gray, Navy Blue

COUNTERTOPS

With a new countertop, you can completely transform the look of your kitchen, bath or laundry. We have a large selection of quartz, granite, and marble countertops that will completely transform your kitchen.

OUR COLLECTIONS





RQ09609 CALACATTA PARIS



RQ09295 CALACATTA MIEL



RQ09365 CALACATTA COHINA



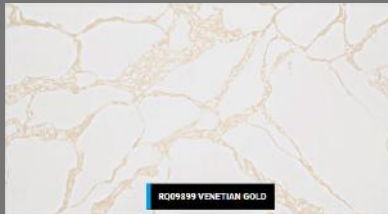
RQ09902 CALACATTA SUPREME



RQ09734 SANTANA GOLD



RQ09882 STATUARIO EXTRA



RQ09899 VENETIAN GOLD



RQ09884 CALACATTA VOLCANO



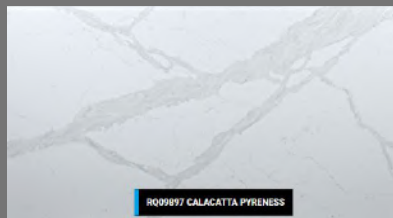
RQ09800 PORTORO BLACK



RQ09895 SAN LAURENT



RQ09896 CALACATTA VENETIAN



RQ09897 CALACATTA PYRENESS



RQ09713 CALACATTA NERO



RQ09506 CALACATTA MICHAEL ANGELO



RQ09890 CALACATTA MAYA



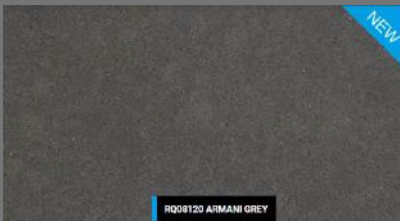
RQ09891 CALACATTA MANHATTAN



RQ09687 ARMANI ROYAL



RQ091003 BEACH GREY



RQ09120 ARMANI GREY



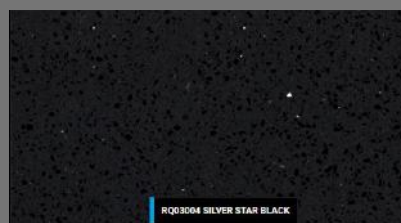
RQ09886 ARMANI IMPERIAL



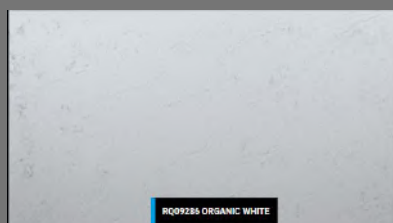
RQ08011 EXPLOSION WHITE



RQ03009 SILVER STAR GREY



RQ03004 SILVER STAR BLACK



RQ09285 ORGANIC WHITE

CLOSETS

Walk into your dreams. With a big choice of materials and styles, we're geared up to satisfy your maximum aesthetic demands.

OUR COLLECTIONS

WALK-IN CLOSETS



Large or small, a walk-in closet is a room all its own. Being able to see your clothes and accessories at a glance, one season at a time, makes getting ready every day a breeze. And with so many design options—like accent lighting, beautiful hardware and smart accessories—it's like dressing in your own personal boutique.

KEY PRODUCT FEATURES

- Design details such as decorative hardware and glass shelves personalize the space to make the closet truly your own.
- Designated shoe shelves and jewelry drawer inserts create smarter and more accessible storage.
- A centre island, a bench seating area, and deeper drawers all impact the improved functionality of a space.
- Our drawers feature dovetail construction, under-mount slides, and quiet, soft-close mechanisms to ensure superior quality and a lifetime of use.
- A custom, walk-in closet provides space-saving options, including multiple hanging areas, adjustable shelving, drawers, baskets, and hampers.
- Lighting increases functionality and accessibility, dramatically enhancing the aesthetic of a simple design.
- Options include LED, puck, and ribbon lights with multiple switching choices.
- Optional decorative moldings and details further customize the overall look to make the space feel like a built-in feature within your home.

REACH-IN CLOSETS



A reach-in closet is probably the most important place in your home to introduce solutions that maximize storage. Since the space is small but accessible, it requires a combination of high function and bedroom design aesthetic. Drawers, shelves, inserts, differing heights of hanging rods, and other options give clothing, shoes, and accessories a home that is organized and easily accessible.

KEY PRODUCT FEATURES

- A custom-designed closet includes space-saving options, such as multiple hanging areas, adjustable shelving, drawers, baskets, and hampers.
- A set of drawers in a reach-in closet adds storage capacity and puts everything within reach.
- Our drawers feature dovetail construction, under-mount slides, and quiet soft-close mechanisms to ensure superior quality and a lifetime of use.
- Options for on- or off-the-floor construction are available to fit your budget, aesthetic, and storage needs.
- Lighting increases functionality and accessibility, dramatically enhancing the aesthetic of a simple design.
- Options include LED, puck, and ribbon lights with multiple switching choices.
- Our designs can take advantage of corners with custom solutions that maximize small spaces.

FINISHING

Personalize your space. Add the finishing touch to your cabinets with our broad selections.

THE FINISHING TOUCHES

MOULDING



*More options available.

Add the finishing touch to your cabinets with our broad selection of finished mouldings. Light rail moulding allows under cabinet task lighting to be neatly tucked out of sight, while our selection of crown mouldings, from cove to classic, add a level of beauty and sophistication to the room. We offer many different types of decorative and utility mouldings in all finishes to accentuate and complete the space.

FILLERS



*More options available.

We offer a variety of fluted and standard, overlay fillers, and decorative end panels to help complete the cabinets with style. Create smooth transitions in cabinet layouts with fillers.

PANELS



*More options available.

Use decorative end panels to add character and a finish touch to your design. Utility panels, like refrigerator end panels, dishwasher end panels, and island back panels accommodate endless kitchen layouts.

DESIGN ELEMENTS



*More options available.

Your cabinets should reflect your style. Our wide variety of decorative wood accessories add a touch of character to the cabinet design. Whether your ideal space is traditional, transitional or contemporary, we have the selection available to transform the space from “blah” to “ahhh!” Corbels, decorative legs, bun & tapered feet, scalloped arched valance.

SPECIALTY CABINETS



*More options available.

Our wide selection of specialty cabinets expands the functionality to fit your lifestyle. Whether you need an elegant storage solution for your bottles of wine or want a space to display your trendy decorative plates, we have the solutions that work for you.

Wine rack, Plate Rack, Microwave Wall Cabinet, Microwave Base Cabinet.

ACCESSORIES

Create an Organized & Efficient Kitchen. From disorder to order, with solutions for challenging storage areas. Select cabinet organizers to conquer clutter.

PERSONALIZE YOUR SPACE

DECORATIVE CABINET HARDWARE



Add the perfect finishing touch to your Plus Kitchen Cabinets with knobs and pulls! We know every detail you choose plays a role in personalizing your space, really bringing it to life. Cabinet knobs and pulls often take center stage by adding the finishing touch on the perfect design. There are 200s of different knobs and pulls to choose from in various sizes, options, and price points so that you can achieve that perfect look.

*More options available.

CABINET ORGANIZERS

Select cabinet organizers to conquer clutter. Organize kitchen essentials and put them at your fingertips. No more reaching! More than 50 options available.

POPULAR



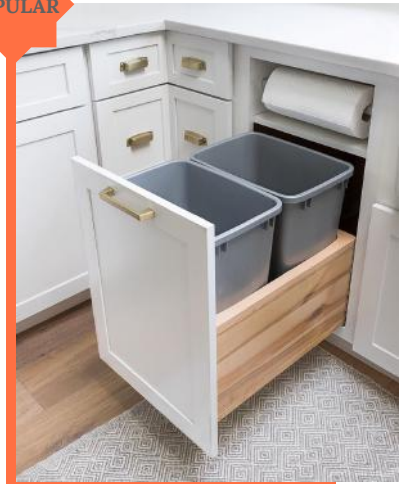
LAZY SUZAN

POPULAR



PULL-OUT SPICE RACK

POPULAR



TRASH CAN RACK

STAINLESS STEEL SINKS

The sink is an often overlooked focal point in the home. Preparing a chef-inspired meal for the family or giving the dog a well-needed bath in the laundry room are just a few times a sink is gathered around each day with purpose. Not only does a sink need to hold up against everyday life, but it should also add a look of sophistication and elegance to a room. We to offer a line of Stainless Steel Kitchen, Bar and Utility sinks for the everyday home. We offer a variety of top sizes and styles of sinks, all manufactured from the highest quality materials.



STAINLESS STEEL SINKS



FARM SINK

KITCHEN AND BATH FAUCETS

Whether bathroom or kitchen, guest room or primary suite, we are dedicated to helping you find your signature style.



KITCHEN FAUCET



BATHROOM FAUCET

*More options available.



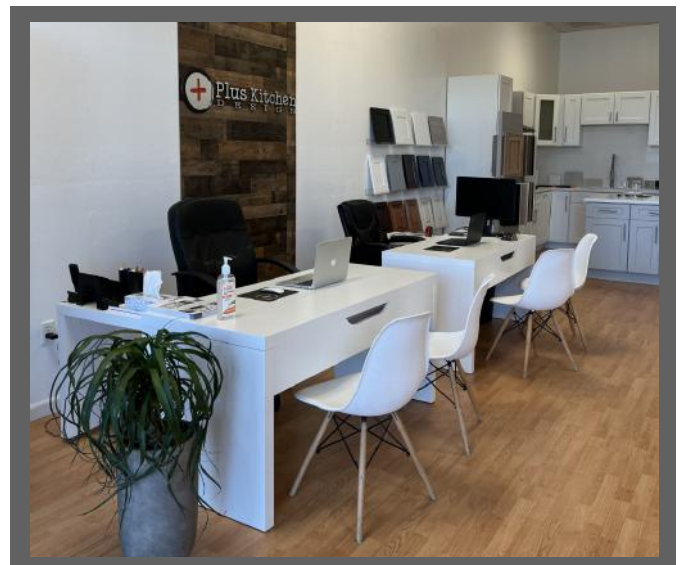
📍 **Showroom:**
1242 SW Pine Island Rd. Suite 51
Cape Coral/FL - 33991

✉ info@pluskitchendesign.com

☎ 239.673.8182 📠 239.292.2206

📷 @pluskitchendesign

📘 pluskitchendesign





🌐 www.pluskitchendesign.com